



Lauren's Tote

This adorable tote can be constructed quickly and easily using a serger. It's even reversible for a totally different look!

Skill Level: Beginner

Supplies:

- Baby Lock Lauren Serger
- 4 Spools Maxi-Lock serger thread
- 2 Spools ivory woolly nylon extra thread
- 3/4 yard printed home décor fabric
- 3/4 yard blue home décor fabric
- 1/4 yard green home décor fabric
- 1/4 yard gold home décor fabric
- Iron
- Cardboard
- Pins
- Hand needle

Instructions:

1. Cut:
 - Two 8-1/2" x 16-1/2" pieces of print for the outside top
 - Two 17" x 16-1/2" pieces of print for the inside fabric
 - Two 2-1/2" x 27" pieces of blue for the straps
 - Eight 2-1/2" x 7" pieces of blue for the outside base
 - Two 2-1/2" x 7" pieces of gold for the outside base center strips
 - Four 2-1/2" x 7" pieces of green for the outside base
2. Thread the serger for a four thread stitch with the woolly nylon extra thread in the upper and lower loopers and maxi lock thread in the needles.
3. Place the 7" long strips into two sets of seven in the following color order: blue, green, blue, gold, blue, green, blue.

4. Set your serger for 3-thread wide stitch with left needle, upper looper thread and lower looper thread between 2.0-4.0.

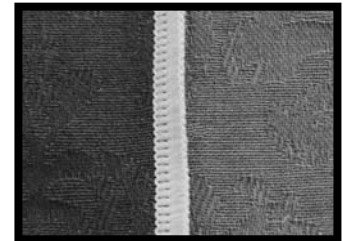


Fig. 1

5. With wrong sides together, serge first set of strips together. Then serge second set of strips together. (Fig. 1)

6. Now you have two larger pieces for the outside base of the tote bag. Press seams outward. (Fig. 2)

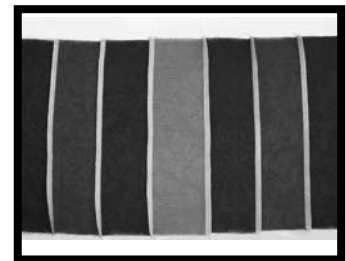


Fig. 2





Fig. 3

7. With right sides together, serge one 8-1/2" x 16-1/2" outside top piece to one of the outside base sections. Press the seam. Repeat for the second half. **(Fig. 3)**
8. Place the two outside pieces together and serge along both sides and across the bottom leaving the top edge open.
9. Place the two 17" x 16-1/2" inside fabric pieces right sides together.
10. Serge across the bottom and down one side. When serging the other side seam, leave an opening about 4" long for turning.
11. Pull the bottom corners into a point and measure approximately 1" inch in from the point.
12. Serge the point off and repeat for the other corner on the opposite side. This will give the bag a flat bottom.
13. Repeat this step for the outside bag bottom corners.
14. With right sides together, serge each strap piece lengthwise.
15. Turn the straps right side out and press.
16. Place the outer bag section and the inside bag section with right sides together.
17. Insert the entire strap between the layers on each side. Position each of the strap ends 4" from the side seam and hold in place with a pin.
18. Serge around the top edge catching only the raw edges of the straps. Do not serge over the pins.
19. Turn the bag right side out through the 4" opening in the side.
20. Press to shape the bag.
21. Cut a piece of cardboard and insert it into the base of the tote.
22. Use a hand needle and thread to tack it into position to keep it from sliding when you reverse the bag.
23. Use the hand needle and stitch the opening closed.



FOR THE LOVE OF SEWING

For other exciting projects like this one, visit our Web site at www.babylock.com